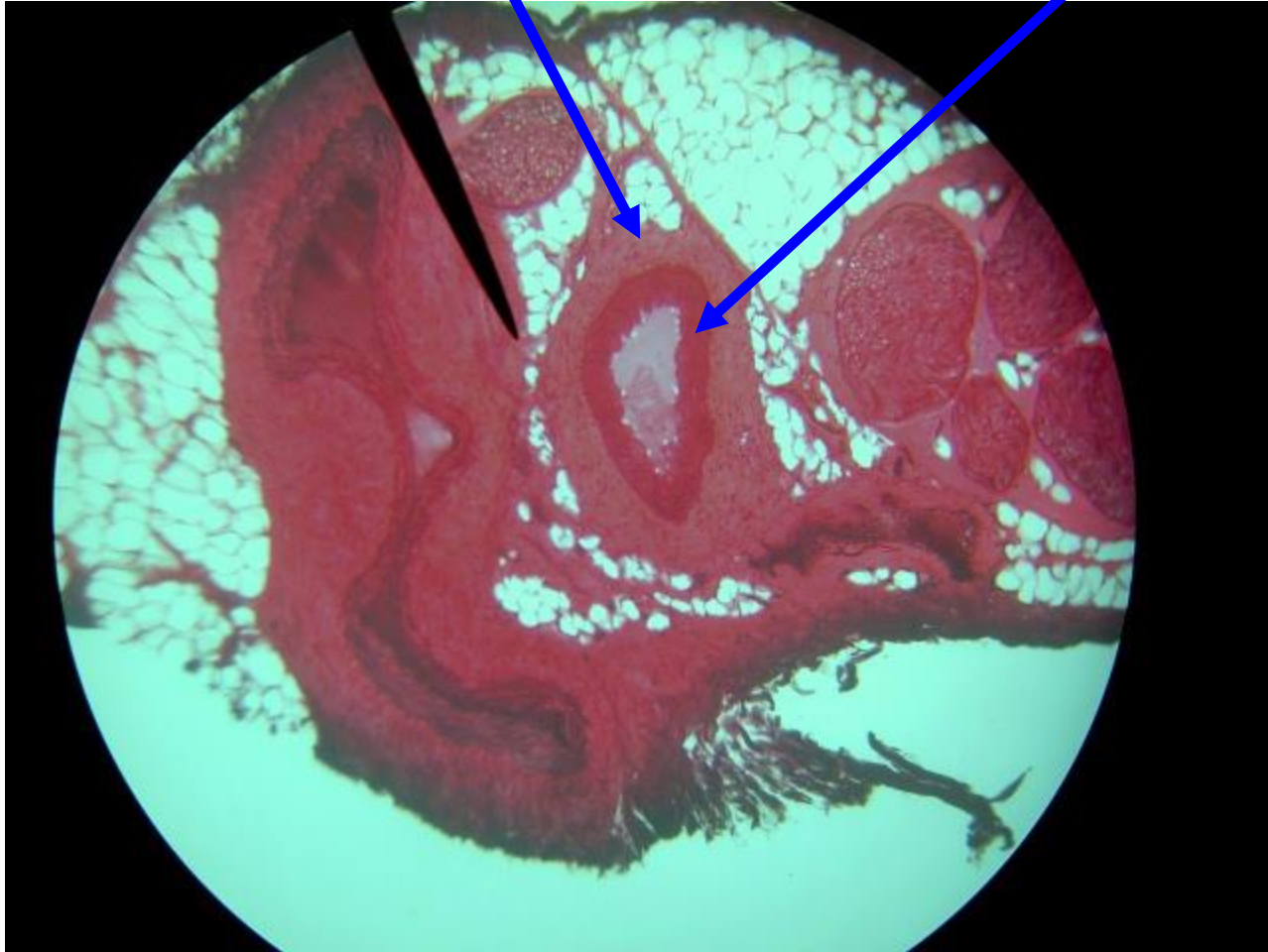


# Blood Vessel Histology

# ARTERY

Tunica Externa

Tunica Media

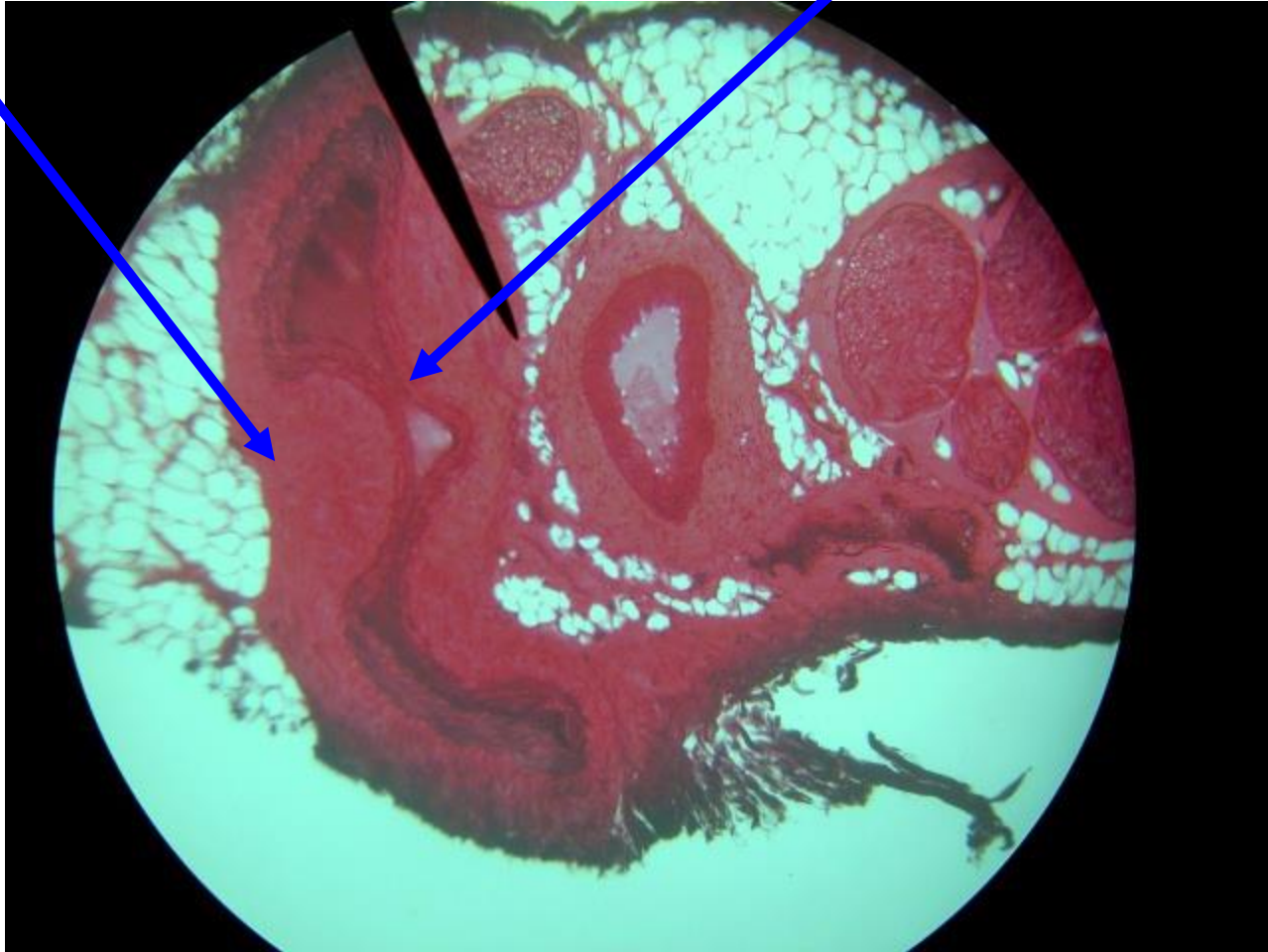


**Tunica Interna: too thin to be seen, but is next to the lumen**

# VEIN

Tunica Media

Tunica Externa



Tunica Interna: too thin to be seen, but is next to the lumen

# Vasa Vasorum

Vessels of the Vessels: supplies the walls of blood vessels with blood. Found in the tunica externa of arteries and veins.

