

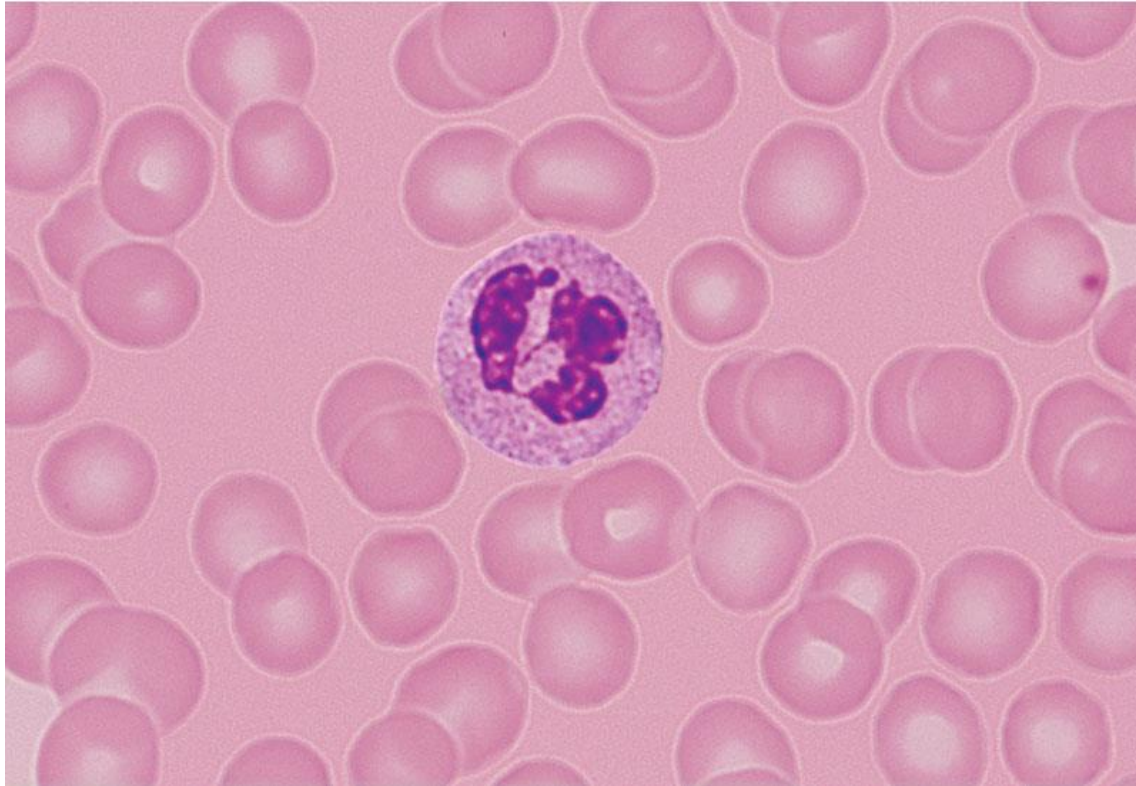
Blood Cell Histology

Blood Cell Histology

- I will use the diagrams similar to the ones on page 324 to test you on blood cells.
- Be able to identify:
 - Erythrocytes (red blood cells)
 - Neutrophil
 - Lymphocyte
 - Monocyte
 - Eosinophil
 - Basophil

Neutrophils – odd shaped, lobed nucleus

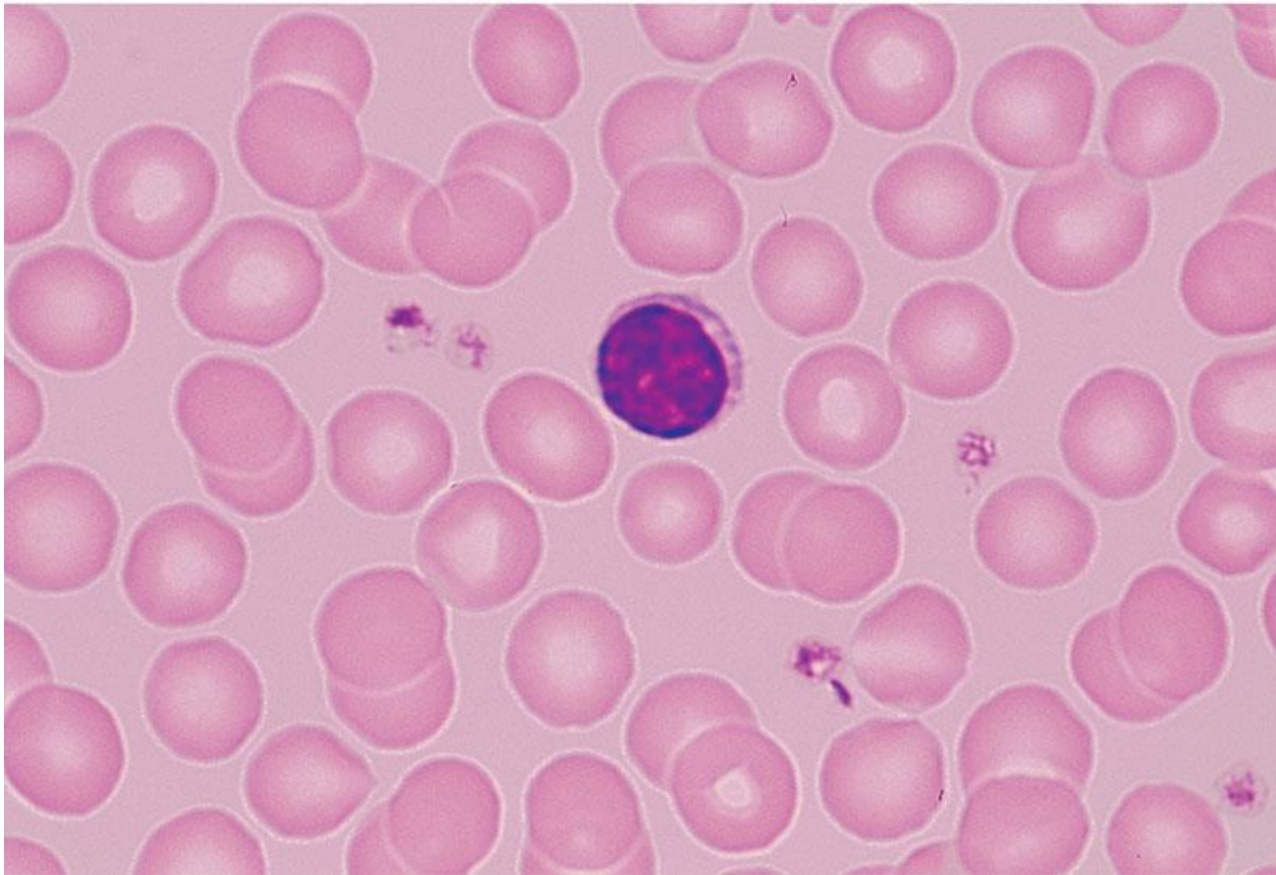
Copyright © The McGraw-Hill Companies, Inc. Permission required for reproduction or display.



Lymphocytes

Small (about same size as the RBC's) with a round nucleus that fills up most of the cell

Copyright © The McGraw-Hill Companies, Inc. Permission required for reproduction or display.



Monocytes

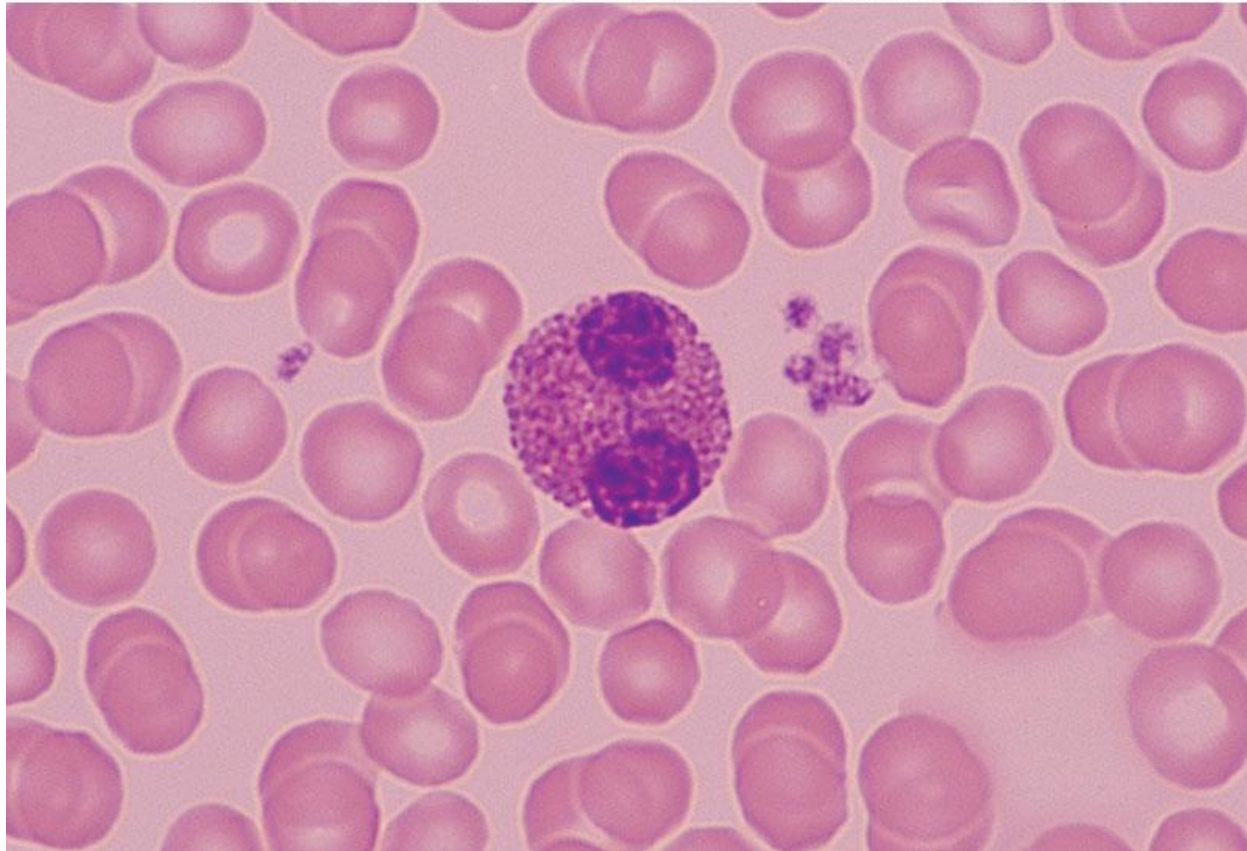
Big (they're the biggest!) with a fat-U nucleus



Eosinophils

Cytoplasm is more pinkish in color, VERY granular, sometimes have a “snowman” nucleus

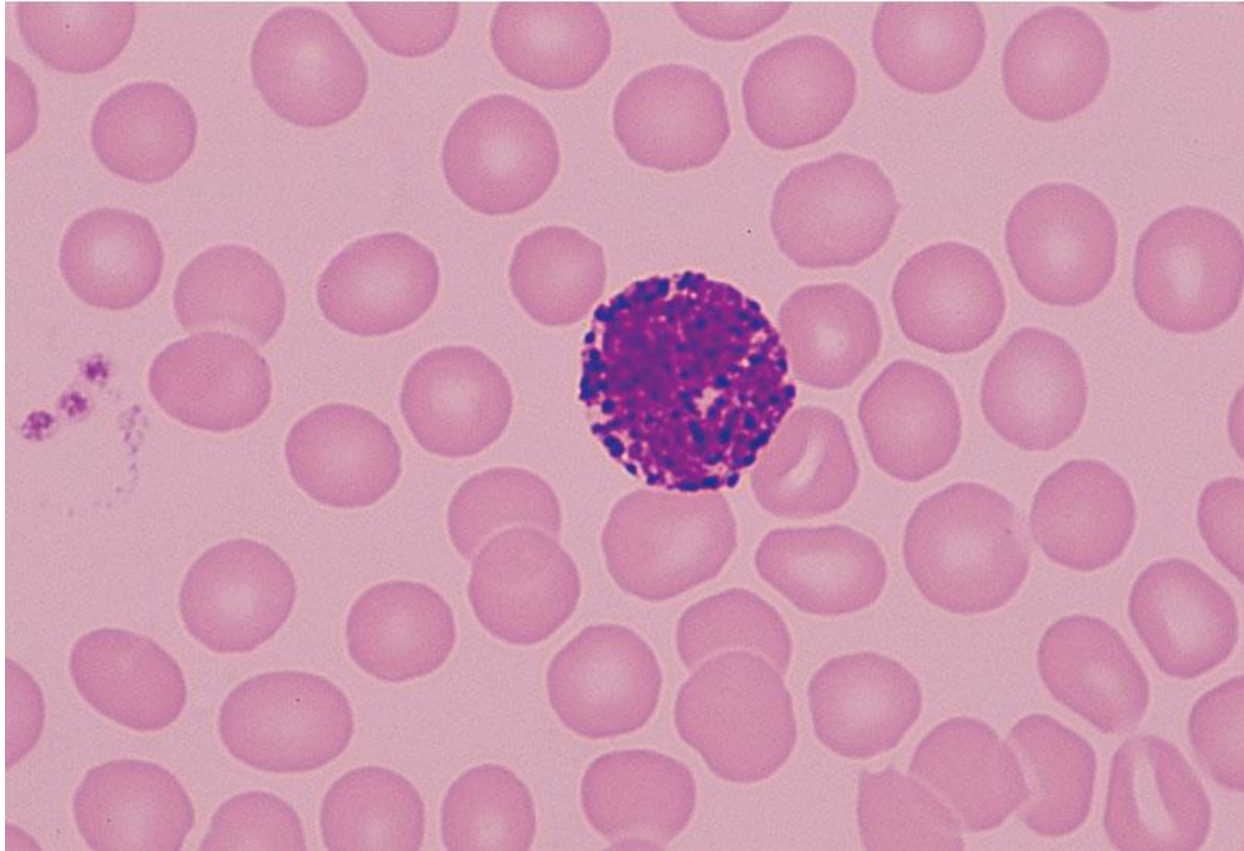
Copyright © The McGraw-Hill Companies, Inc. Permission required for reproduction or display.



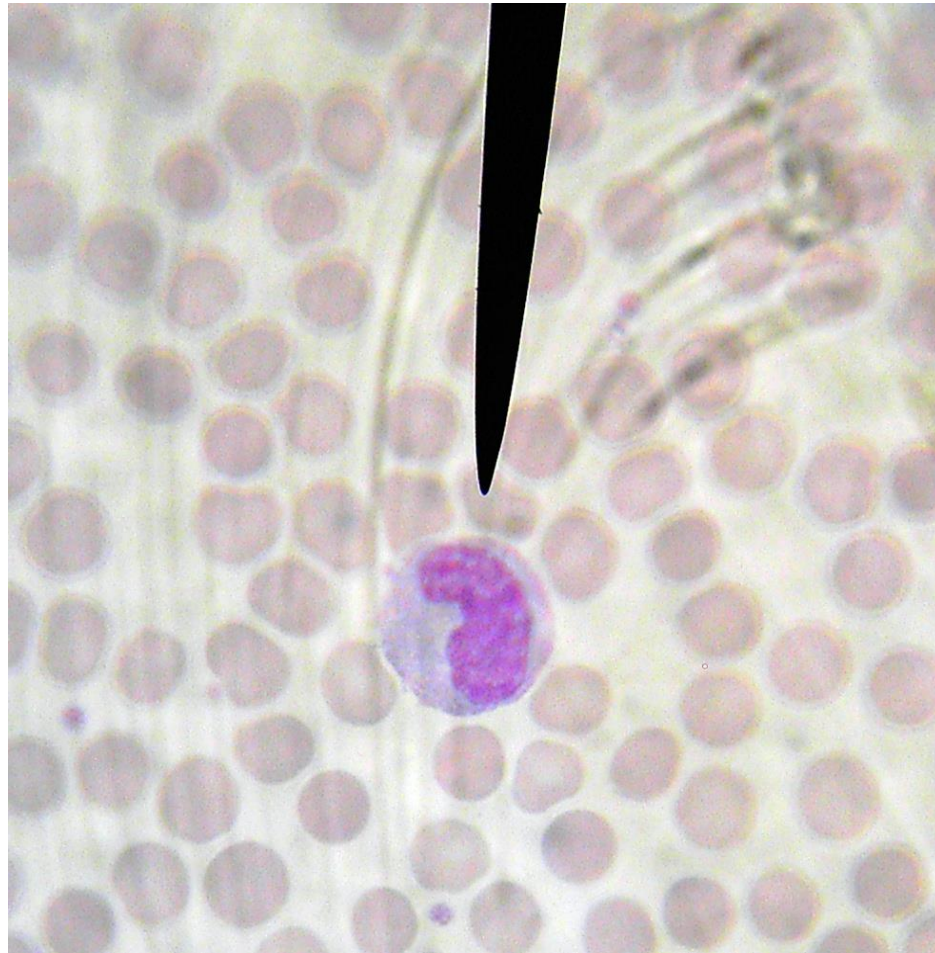
Basophils

Cytoplasm is more blue-ish in color, VERY granular

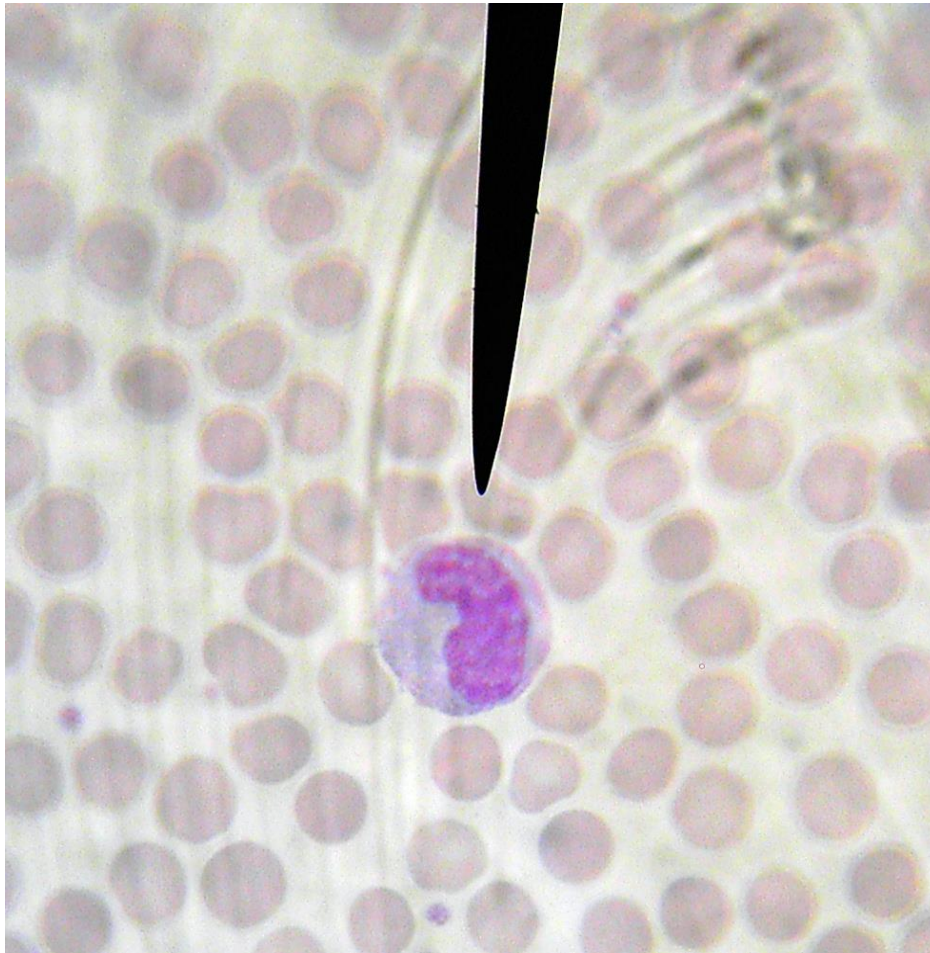
Copyright © The McGraw-Hill Companies, Inc. Permission required for reproduction or display.



Name this blood cell.

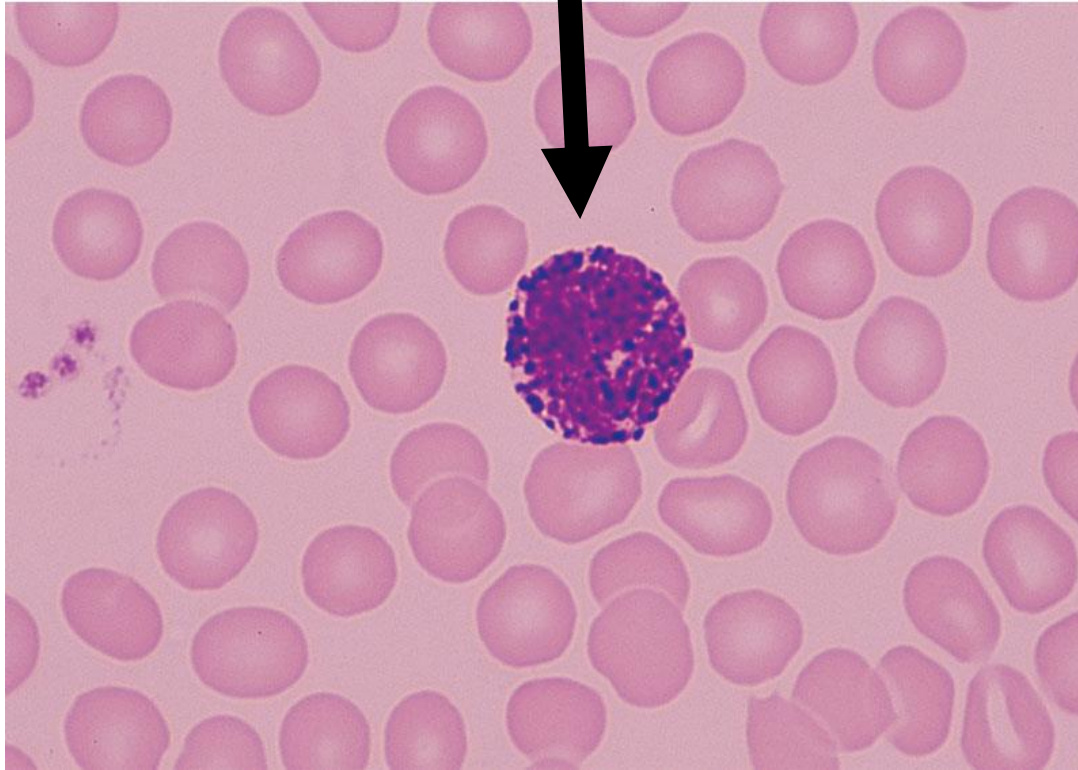


Monocyte



Name this blood cell.

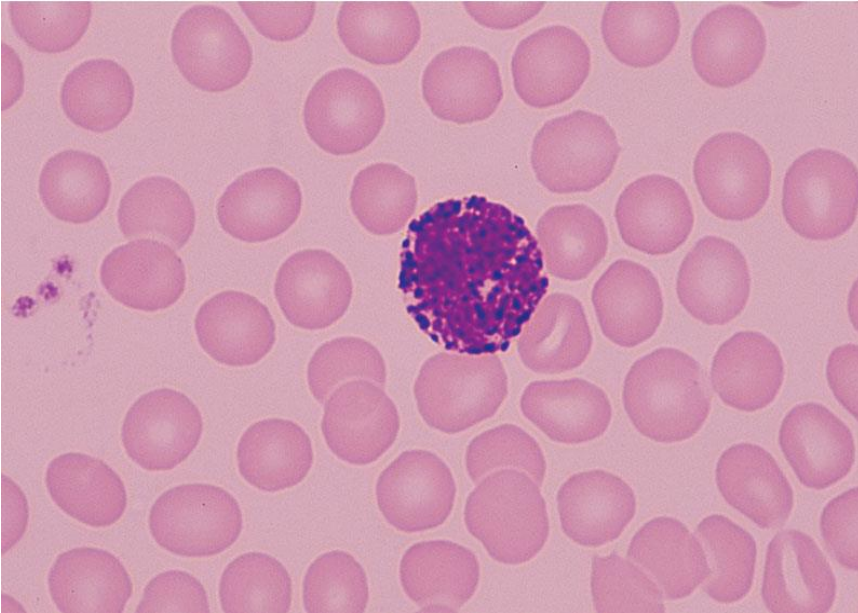
Copyright © The McGraw-Hill Companies, Inc. Permission required for reproduction or display.



Basophil

If you are getting them confused with lymphocytes, note the **SIZE**. Basophils are **LARGER** than RBC's whereas lymphocytes are the same size as RBC's.

Copyright © The McGraw-Hill Companies, Inc. Permission required for reproduction or display.



Copyright © The McGraw-Hill Companies, Inc. Permission required for reproduction or display.

